



20130816000891940 1/5  
 Bk: LR201317 Pg:4232  
 Jefferson County, Alabama  
 I certify this instrument filed on:  
 08/16/2013 09:38:47 AM ORD  
 Judge of Probate- Alan L. King

ORDINANCE NO. 2013 - 14

**AN ORDINANCE ANNEXING CERTAIN TERRITORY INTO THE CORPORATE LIMITS OF THE CITY OF PINSON, ALABAMA**

WHEREAS, **CSB ALABAMA CRE HOLDINGS LLC** ("Petitioners"), the owners of the property described hereinafter ("Property"), have filed a written petition with the City Clerk of the City of Pinson stating that they are the owners of the Property; and requesting that the Property be annexed into the City of Pinson; and

WHEREAS, the petition contains an accurate description of the Property and was accompanied by a map of the Property showing its relationship to the corporate limits of the City of Pinson; and

WHEREAS, the Property is contiguous to the corporate limits of the City of Pinson; and

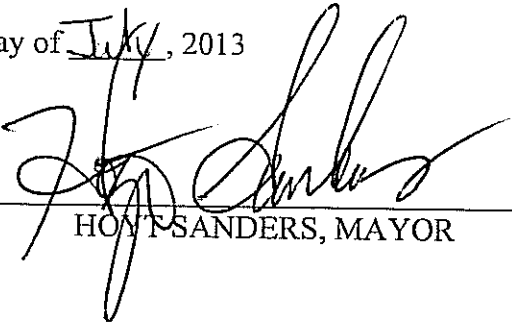
WHEREAS, the Property is not within the corporate limits or the police jurisdiction of any other municipality,

NOW, THEREFORE, BE IT ORDAINED by the City Council of the City of Pinson, Alabama as follows:

That the City Council of the City of Pinson, Alabama, does hereby assent to the annexation of the following described property to the City of Pinson:

1. **Parcel 9-29-1-0-1.000 described as the east 430 feet of the NE ¼, Section 29, TSP 15S R1W lying south of the south ROW line of Innsbrooke Parkway less and except "common area A" as recorded in Map book 217, page 38.**

ADOPTED this the 18<sup>th</sup> day of July, 2013

  
\_\_\_\_\_  
HOYT SANDERS, MAYOR

ATTEST: Marie Turner, CITY CLERK/TREASURER

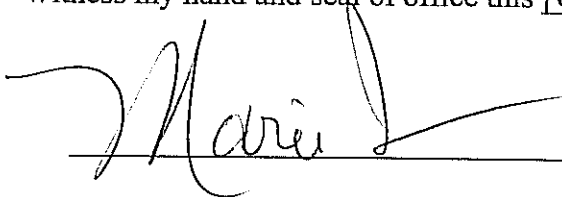
**CERTIFICATION OF CITY CLERK/TREASURER**

STATE OF ALABAMA     )

JEFFERSON COUNTY    )

I, Marie Turner, City Clerk/Treasurer of the City of Pinson, Alabama, do hereby certify that the above and foregoing is a true and correct copy of an Ordinance duly adopted by the City Council of the City of Pinson, Alabama, on the 18<sup>th</sup> day of July, 2013

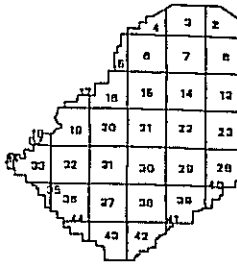
Witness my hand and seal of office this 18<sup>th</sup> day of July, 2013

  
\_\_\_\_\_, City Clerk/Treasurer



SCALE: 1" = 100' DATE: 200

COUNTY LOCAT



TOWNSHIP LOCAT

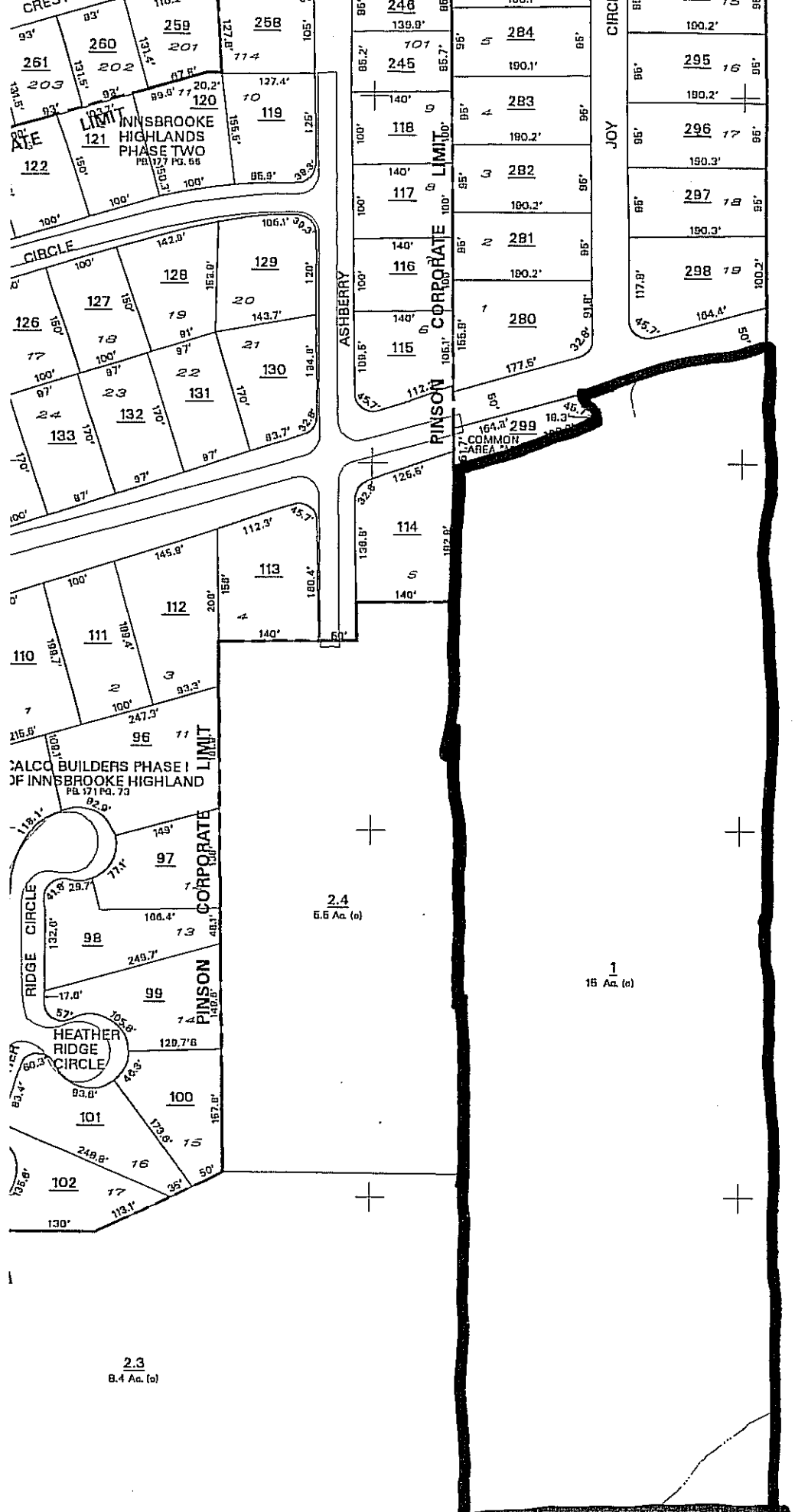
6	5	4	3	2
7	8	9	10	11
12	13	14	15	16
17	18	19	20	21
22	23	24	25	26
27	28	29	30	31
32	33	34	35	36

SUB-SHEET INDE

20-1	20-4	21-3
20-2	20-5	20-2
20-3	20-6	20-7

LEGEND

- STATE LINE AREA (FROM
- COUNTY LINE AREA (CALC
- CITY LIMIT LINE DIMENSION
- TOWNSHIP LINE DIMENSION
- SECTION LINE INTERSTAT
- PROPERTY LINE U.S. HIGHW
- ROAD R/W STATE HIGH
- ROAD TRAVEL PATH COUNTY H
- PRIVATE ROAD OR TRAIL COUNTY H
- RAIL ROAD R/W 511 NUMB
- WATER SUBDIVISI
- LAND HOOK MAP BLOC
- ORIGINAL SUBJ. LOT LINE (WHERE A
- MAJOR TRANSMISSION LINES MAP BLOC
- CONFLICT (WHERE A
- CHURCHES, SCHOOLS, CEMETERIES, AIRPORTS, BY NAME SUBDIVISI
- GOV'T LAND, ETC. (WHERE AF
- STATE PLAI
- COORDINA
- 
- 
- 



PINSON CORPORATE LIMIT

SECTION NE 1/4 21  
TSP. 15 SOUTH, RANGE