



ORDINANCE NO. 2013 - 21

**AN ORDINANCE ANNEXING CERTAIN TERRITORY INTO THE  
CORPORATE LIMITS OF THE CITY OF PINSON, ALABAMA**

---

WHEREAS, **Kathy McKNIGHT**, ("Petitioners"), the owners of the property described hereinafter ("Property"), have filed a written petition with the City Clerk of the City of Pinson stating that they are the owners of the Property; and requesting that the Property be annexed into the City of Pinson; and

WHEREAS, the petition contains an accurate description of the Property and was accompanied by a map of the Property showing its relationship to the corporate limits of the City of Pinson; and

WHEREAS, the Property is contiguous to the corporate limits of the City of Pinson; and

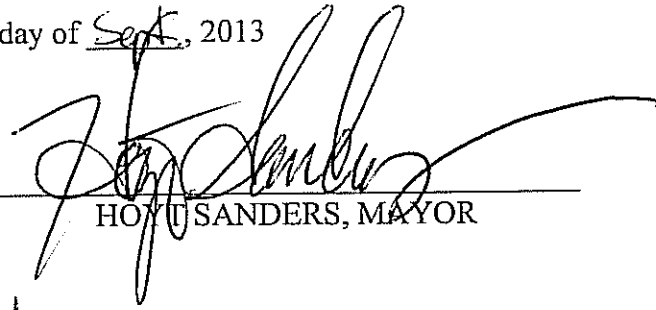
WHEREAS, the Property is not within the corporate limits or the police jurisdiction of any other municipality,

NOW, THEREFORE, BE IT ORDAINED by the City Council of the City of Pinson, Alabama as follows:

That the City Council of the City of Pinson, Alabama, does hereby assent to the annexation of the following described property to the City of Pinson:

1. **Parcel 13-2-4-0-20.018 known as Lot 2o, Oakleigh Town Homes  
located at 3811 Osage Lane.**

ADOPTED this the 5<sup>th</sup> day of Sept, 2013

  
HOYT SANDERS, MAYOR

ATTEST: Marie Turner, CITY CLERK/TREASURER

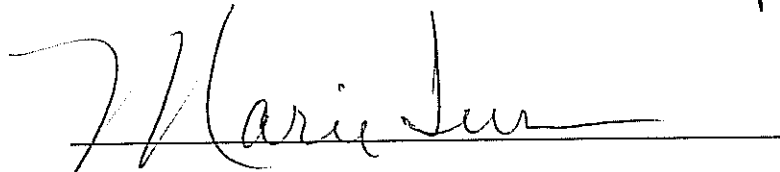
**CERTIFICATION OF CITY CLERK/TREASURER**

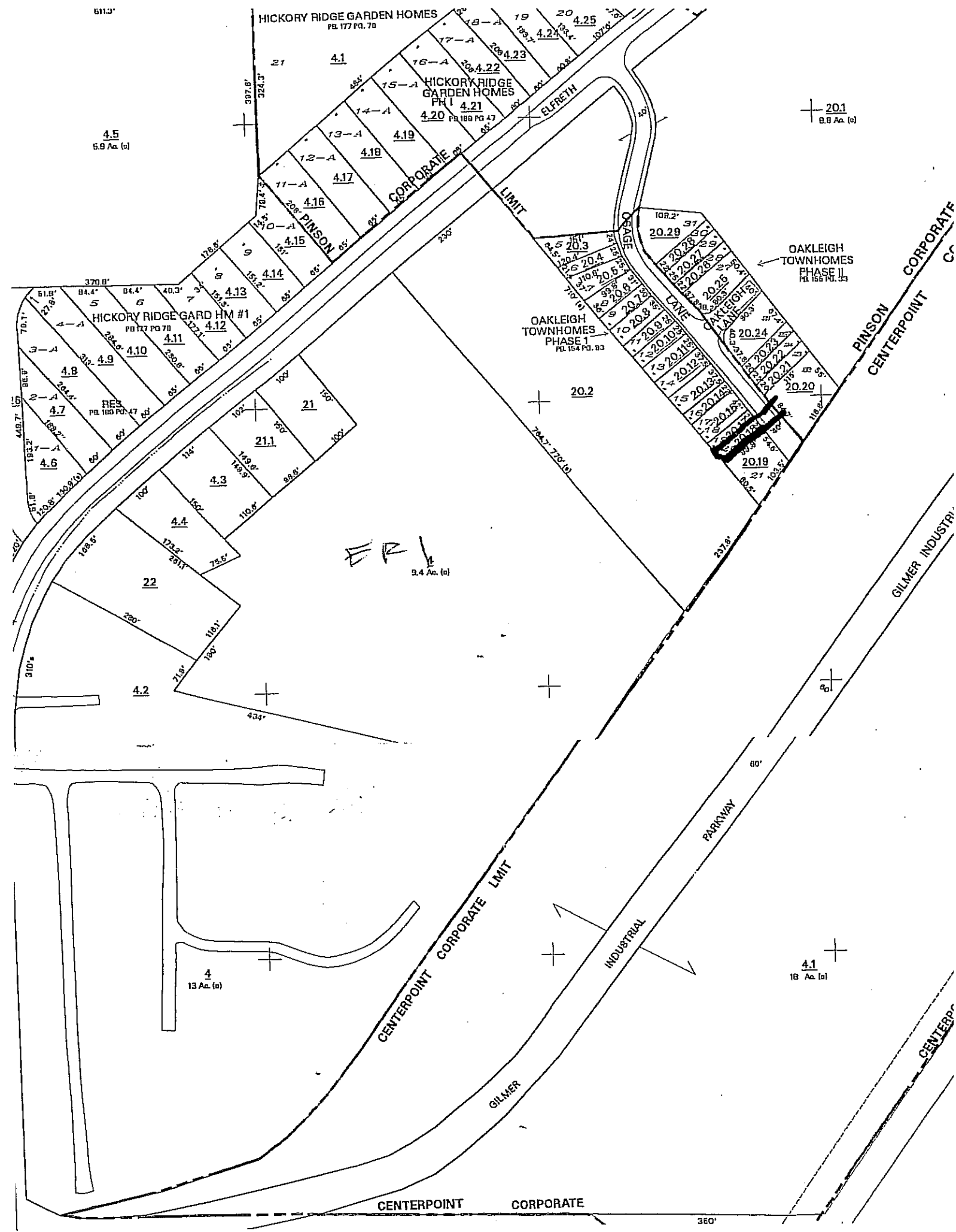
STATE OF ALABAMA     )

JEFFERSON COUNTY     )

I, Marie Turner, City Clerk/Treasurer of the City of Pinson, Alabama, do hereby certify that the above and foregoing is a true and correct copy of an Ordinance duly adopted by the City Council of the City of Pinson, Alabama, on the 5<sup>th</sup> day of September, 2013

Witness my hand and seal of office this 5<sup>th</sup> day of September, 2013

  
City Clerk/Treasurer



HICKORY RIDGE GARDEN HOMES  
PB 177 PG. 70

HICKORY RIDGE GARDEN HOMES  
PH I 4.21  
4.20 PB 180 PG 47

OAKLEIGH TOWNHOMES  
PHASE II  
PB 155 PG. 33

OAKLEIGH TOWNHOMES  
PHASE I  
PB 154 PG. 83

4.5  
5.8 Ac. (a)

20.1  
8.8 Ac. (a)

ER  
9.4 Ac. (a)

4.1  
18 Ac. (a)

4  
13 Ac. (a)

CENTERPOINT CORPORATE LIMIT

INDUSTRIAL

PARKWAY

GILMER

CENTERPOINT CORPORATE

PINSON CORPORATE CENTER

GILMER INDUSTRIAL