

ORDINANCE NO. 2013 -

32

**AN ORDINANCE ANNEXING CERTAIN TERRITORY INTO THE
CORPORATE LIMITS OF THE CITY OF PINSON, ALABAMA**

WHEREAS, **Tommy & Angela REED and Brenda OLIVER**, ("Petitioners"),
the owners of the property described hereinafter ("Property"), have filed a written petition
with the City Clerk of the City of Pinson stating that they are the owners of the Property;
and requesting that the Property be annexed into the City of Pinson; and

WHEREAS, the petition contains an accurate description of the Property and was
accompanied by a map of the Property showing its relationship to the corporate limits of
the City of Pinson; and

WHEREAS, the Property is contiguous to the corporate limits of the City of
Pinson; and

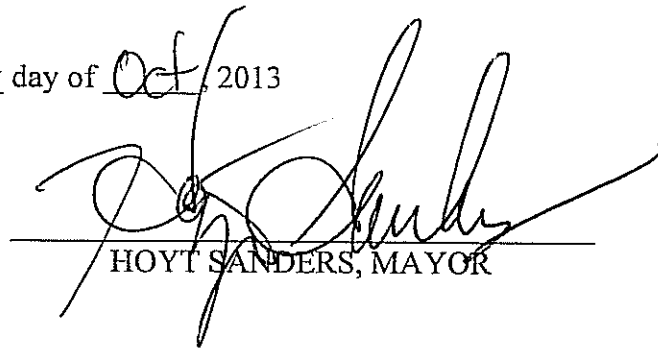
WHEREAS, the Property is not within the corporate limits or the police
jurisdiction of any other municipality,

NOW, THEREFORE, BE IT ORDAINED by the City Council of the City of
Pinson, Alabama as follows:

That the City Council of the City of Pinson, Alabama, does hereby assent to the
annexation of the following described property to the City of Pinson:

1. **Parcels 13-2-4-0-20.003 and 20.004 described as Lots 5 and 6
OAKLEAIGH Townhomes 154/83 located at 3301 and 3303 Osage
Lane**

ADOPTED this the 17th day of Oct, 2013


HOYT SANDERS, MAYOR

ATTEST: Marie L, CITY CLERK/TREASURER

CERTIFICATION OF CITY CLERK/TREASURER

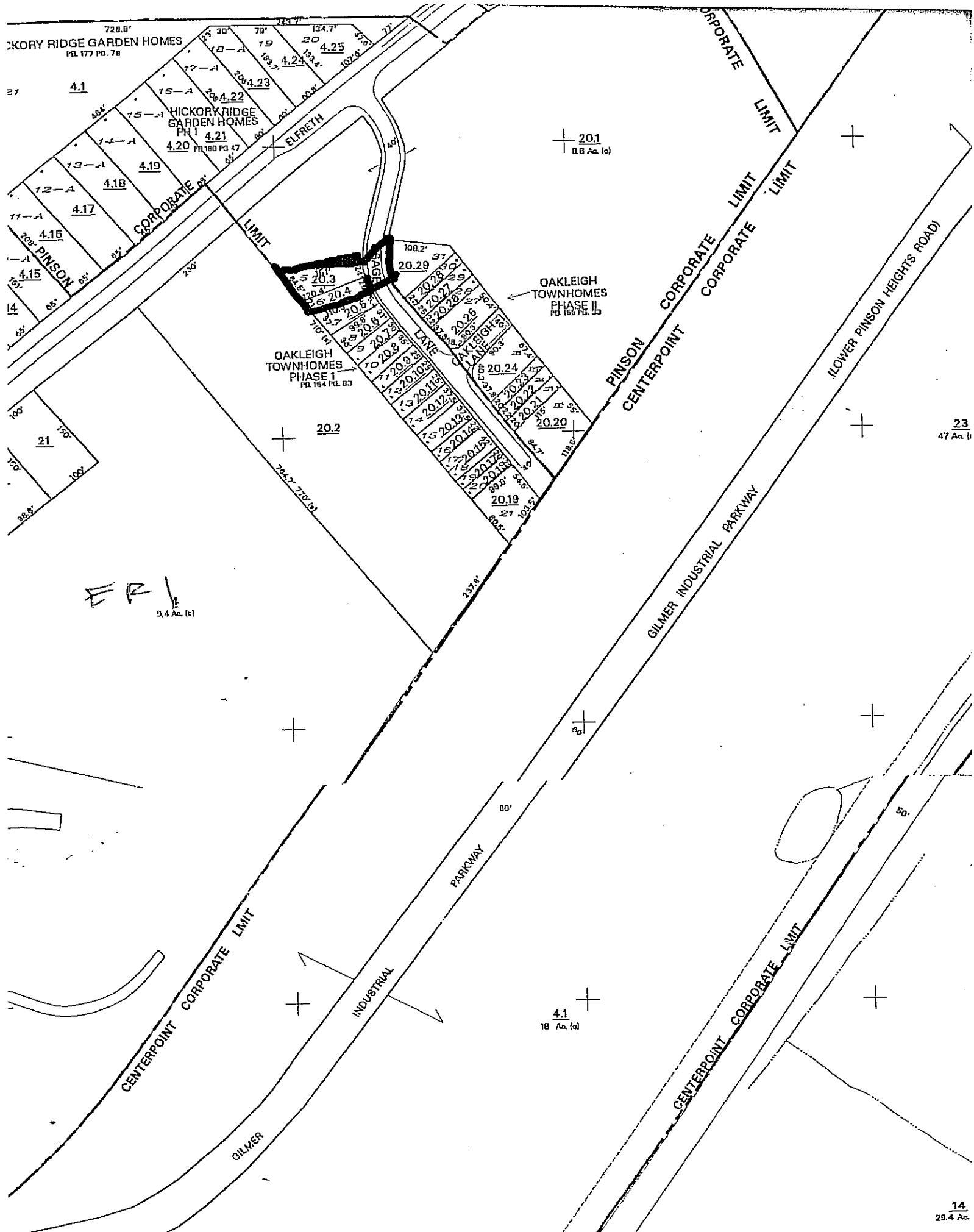
STATE OF ALABAMA)

JEFFERSON COUNTY)

I, Marie Turner, City Clerk/Treasurer of the City of Pinson, Alabama, do hereby certify that the above and foregoing is a true and correct copy of an Ordinance duly adopted by the City Council of the City of Pinson, Alabama, on the 17th day of October, 2013

Witness my hand and seal of office this 17th day of October, 2013

Marie L, City Clerk/Treasurer



HICKORY RIDGE GARDEN HOMES
PL 177 PG. 78

HICKORY RIDGE GARDEN HOMES
PH I 4.21
4.20 PL 180 PG 47

OAKLEIGH TOWNHOMES
PHASE II
PL 155 PG. 13

OAKLEIGH TOWNHOMES
PHASE I
PL 154 PG. 83

PINSON
CENTERPOINT

GILMER INDUSTRIAL PARKWAY

LOWER PINSON HEIGHTS ROAD

ER 1
9.4 Ac. (c)

4.1
18 Ac. (c)

20.1
8.8 Ac. (c)

23
47 Ac. (c)

14
29.4 Ac.