



ORDINANCE NO. 2013 -

33

**AN ORDINANCE ANNEXING CERTAIN TERRITORY INTO THE
CORPORATE LIMITS OF THE CITY OF PINSON, ALABAMA**

WHEREAS, **Carl CALLAHAN, President for CALCO BUILDERS and
CALLAHAN CONSTRUCTION**, ("Petitioners"), the owners of the property described
hereinafter ("Property"), have filed a written petition with the City Clerk of the City of
Pinson stating that they are the owners of the Property; and requesting that the Property
be annexed into the City of Pinson; and

WHEREAS, the petition contains an accurate description of the Property and was
accompanied by a map of the Property showing its relationship to the corporate limits of
the City of Pinson; and

WHEREAS, the Property is contiguous to the corporate limits of the City of
Pinson; and

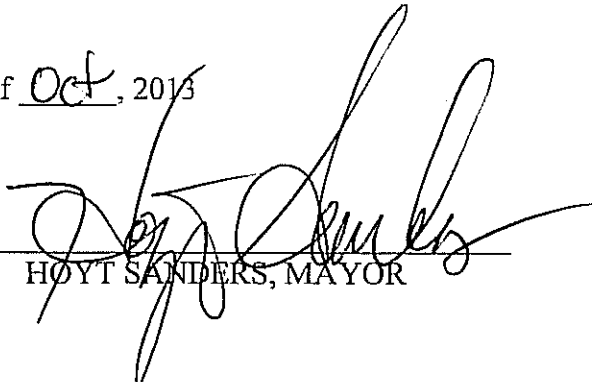
WHEREAS, the Property is not within the corporate limits or the police
jurisdiction of any other municipality,


NOW, THEREFORE, BE IT ORDAINED by the City Council of the City of
Pinson, Alabama as follows:

That the City Council of the City of Pinson, Alabama, does hereby assent to the
annexation of the following described property to the City of Pinson:

1. **Parcels 9-29-1-0-2.003 and 2.004 with irregular descriptions shown
on the petition located on Ashberry Drive**

ADOPTED this the 17th day of Oct, 2013


HOYT SANDERS, MAYOR

ATTEST: , CITY CLERK/TREASURER

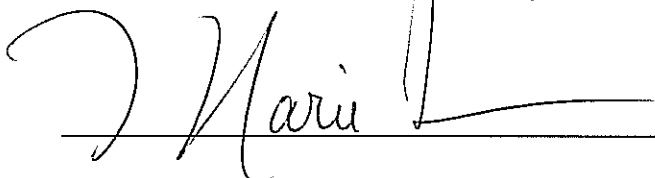
CERTIFICATION OF CITY CLERK/TREASURER

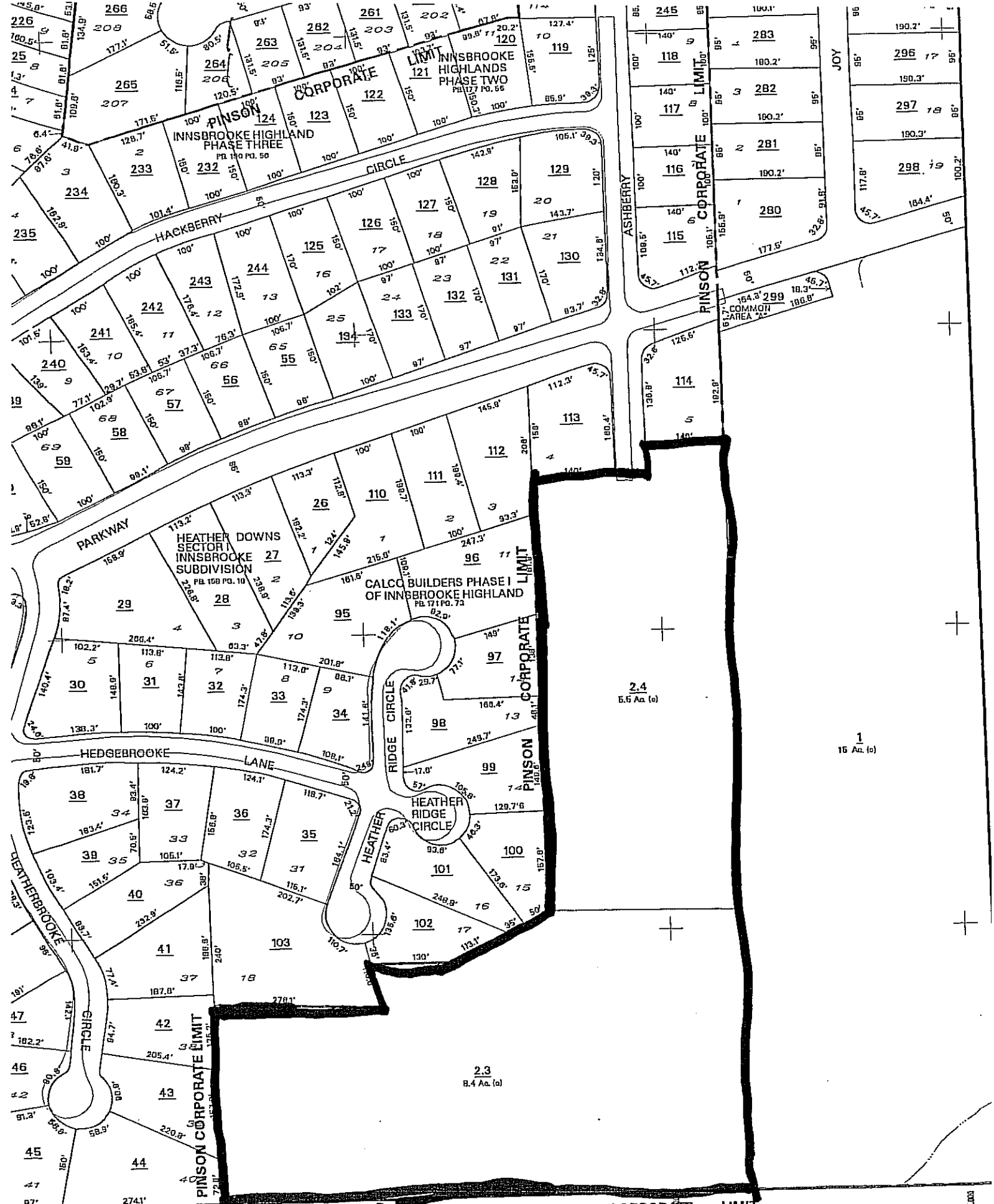
STATE OF ALABAMA)

JEFFERSON COUNTY)

I, Marie Turner, City Clerk/Treasurer of the City of Pinson, Alabama, do hereby certify that the above and foregoing is a true and correct copy of an Ordinance duly adopted by the City Council of the City of Pinson, Alabama, on the 17th day of October, 2013

Witness my hand and seal of office this 17th day of October, 2013


_____, City Clerk/Treasurer



IRITTANY PLACE SECTOR V
OF INNSBROOKE PB 182 PG. 109

PINSON CORPORATE LIMIT